



MONTHLY MEMBERSHIP PROGRESS REPORT

District 60 B

Results as of: 5/31/2016

GMT: HARVEY WHITLEY

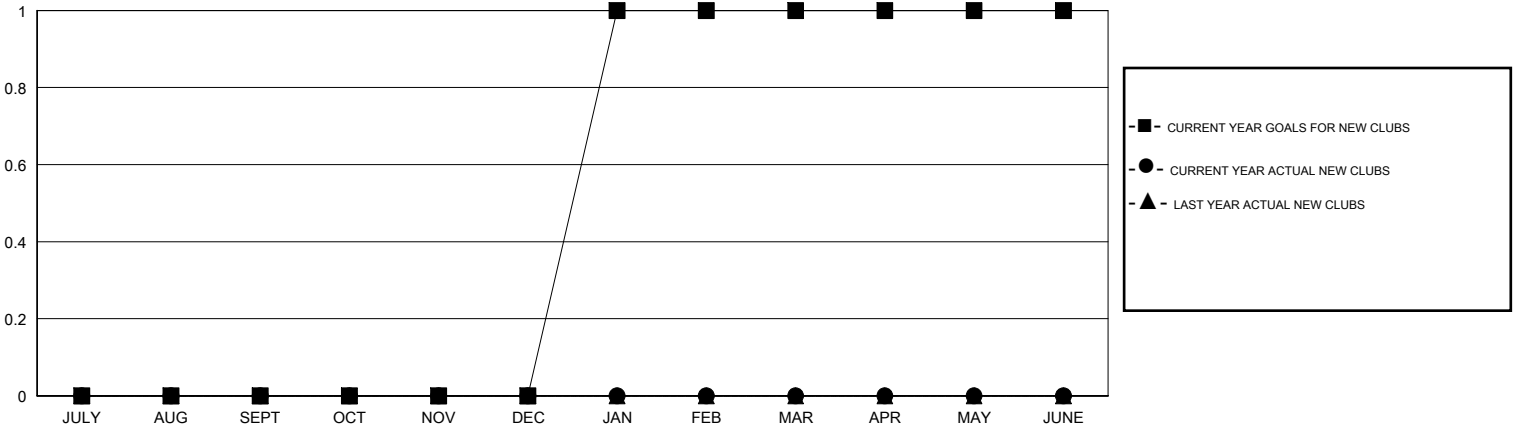
LOCATION JAMAICA

GMT CA 1

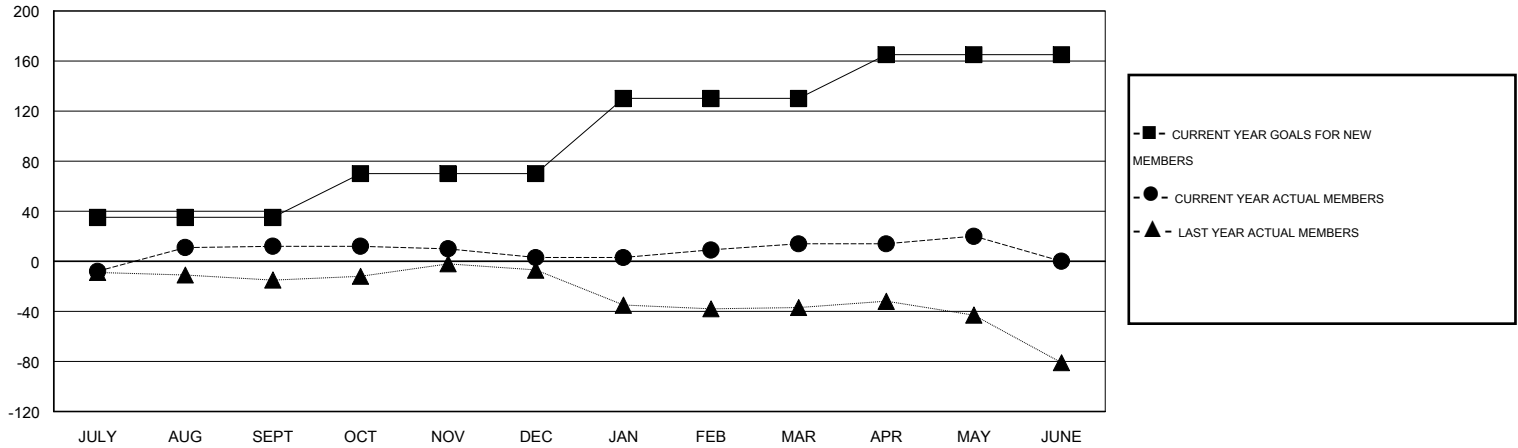
Clubs				
RESULTS FOR 2015-2016				
QUARTER	NEW CLUB GOAL	NEW CLUBS	DROPPED CLUBS	NET GAIN/LOSS
JULY/AUG/SEPT	0	0	0	0
OCT/NOV/DEC	0	0	0	0
JAN/FEB/MAR	1	0	0	0
APR/MAY/JUNE	0	0	0	0

Members				
RESULTS FOR 2015-2016				
QUARTER	NEW MEMBER GOAL	CHARTER AND NEW MEMBERS ADDED	DROPPED MEMBERS	NET GAIN/LOSS
JULY/AUG/SEPT	35	35	23	12
OCT/NOV/DEC	35	24	33	-9
JAN/FEB/MAR	60	26	15	11
APR/MAY/JUNE	35	29	23	6

GOALS AND ACTUAL NEW CLUBS CUMULATIVE



GOALS AND ACTUAL MEMBERS CUMULATIVE



DROPPED CLUBS: 0

38 CLUBS OF 59 ADDED 1 OR MORE NEW MEMBERS

GENDER DISTRIBUTION	
MALE	803 (43.48%)
FEMALE	1,044 (56.52%)

DROPPED MEMBERS	
DECEASED	17
CLUB CANCELLED	0
OTHER	77
TOTAL	94

[CLICK HERE FOR HEALTH ASSESSMENT DATA](#)

FAMILY UNIT MEMBERS	47
HEAD OF HOUSEHOLD	23
NON-HEAD OF HOUSEHOLD	24